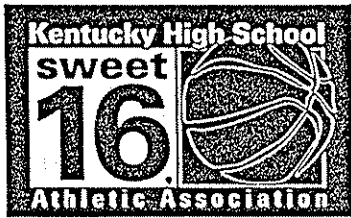


2001 KHSAA

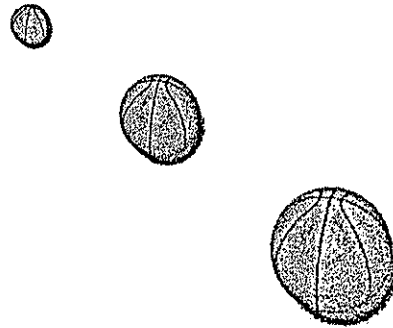


GIRLS' SWEET 16®

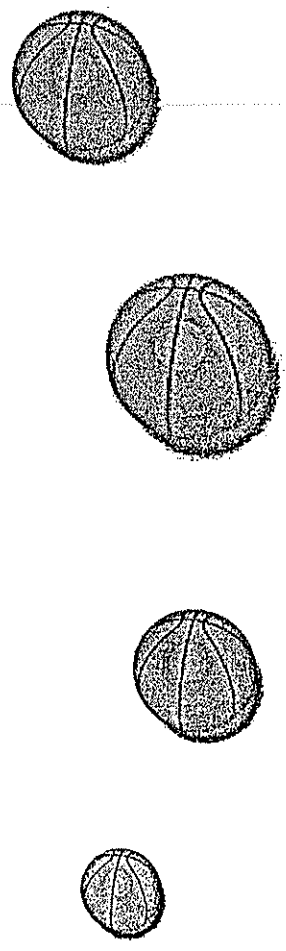
State Basketball Tournament

March 21-24

E.A. Diddle Arena • Bowling Green



FINAL GAME STATS
Fri., March 23 - Session 6 - Game 2
Henderson County Colonels
vs.
Highlands Bluebirds



the
GREATEST
SHOW

in
hoops!

KHSAA Basketball - Game Box Score

Henderson County Lady Colonels vs. Highlands Bluebirds

Date: 03/23/2001 Time: 7:30pm CST Site: Girls' Sweet 16-Diddle Arena Attendance: Unknown

Visitors: Highlands Bluebirds

##	Name	P	FG	3 Pt	FT	PTS	ORB	DRB	TR	PF	AST	TO	BS	ST	MIN
10	* Abbi Gibson		2/4	0/1	0/0	4	0	1	1	4	1	3	0	0	23:55
15	* Kate Winkler		1/5	0/2	0/0	2	0	1	1	1	1	5	0	1	22:31
22	* Katie Konen		0/0	0/0	0/0	0	0	0	0	1	4	0	0	1	24:00
25	* Emily Hamel		2/4	0/0	0/0	4	0	0	0	2	2	0	0	1	26:12
33	* Tara Boothe		8/14	1/2	5/7	22	0	6	6	4	2	6	2	3	30:48
11	Kia Gearding		0/0	0/0	0/0	0	0	0	0	0	0	0	0	0	0:38
14	Jennifer Ball		0/0	0/0	0/0	0	0	0	0	0	0	0	0	0	2:01
24	Emily Owsley		0/0	0/0	0/0	0	1	0	1	0	1	3	0	0	21:26
30	Maggie Brown		0/0	0/0	0/0	0	0	0	0	0	0	0	0	0	4:15
35	Ashlie Berling		0/0	0/0	0/0	0	0	0	0	0	1	0	0	0	0:45
42	Liesl Grause		0/0	0/0	0/0	0	0	1	1	2	0	0	0	1	2:51
45	Shannon Ripberger		1/1	0/0	0/0	2	0	0	0	1	0	0	0	0	0:38
50	Deanna Feilen														DNP
	Team						0	0	0						
	Totals		14/28	1/5	5/7	34	1	9	10	15	12	17	2	7	160

Total FG	1st Half	7/10	70.0%	2nd Half	7/18	38.9%	Game	14/28	50.0%
3 PT FG	1st Half	1/1	100%	2nd Half	0/4	0.00%	Game	1/5	20.0%
Free Throws	1st Half	4/4	100%	2nd Half	1/3	33.3%	Game	5/7	71.4%

Home: Henderson County Lady Colonels

##	Name	P	FG	3 Pt	FT	PTS	ORB	DRB	TR	PF	AST	TO	BS	ST	MIN
10	* Kera Gibson		1/2	1/1	2/2	5	1	1	2	0	3	2	0	1	31:15
15	* Princess Wimsatt		5/6	1/2	2/2	13	0	3	3	3	9	8	0	3	31:15
23	* Shonte Dixon		6/8	0/0	0/0	12	2	1	3	1	3	1	0	0	29:59
31	* Ann Buchanan		1/3	0/0	0/2	2	0	3	3	3	1	2	0	1	23:42
32	* Brooke Fisher		6/11	5/8	4/4	21	0	2	2	0	1	1	1	1	30:48
12	Courtney Buchanan		0/0	0/0	0/0	0	0	0	0	0	0	0	0	0	2:01
22	Jessica Vorbeck		0/0	0/0	0/0	0	0	0	0	0	0	0	0	0	0:45
24	Beth Duncan		0/0	0/0	0/0	0	0	0	0	0	0	0	0	0	0:45
30	Ashley Farris		0/0	0/0	2/2	2	0	0	0	0	0	0	0	0	0:45
33	Katie Farris		0/0	0/0	0/0	0	0	0	0	2	0	0	0	1	1:38
43	Melissa Jarrett		0/0	0/0	0/0	0	0	0	0	1	0	0	0	1	2:51
44	Whitney Waddell		0/0	0/0	0/0	0	0	0	0	1	0	1	0	0	4:16
	Team						0	2	2						
	Totals		19/30	7/11	10/12	55	3	12	15	11	17	15	1	8	160

Total FG	1st Half	12/20	60.0%	2nd Half	7/10	70.0%	Game	19/30	63.3%
3 PT FG	1st Half	4/7	57.1%	2nd Half	3/4	75.0%	Game	7/11	63.6%
Free Throws	1st Half	0/0	0.00%	2nd Half	10/12	83.3%	Game	10/12	83.3%

	Hig	Hen		Hig	Hen		Hig	Hen
Free Throw Pts	5	10	3Pt Points	3	21	Pts/Possession	0.68	1.06
Pts off Turnovers	10	20	2nd Chance Points	0	3	Pts off Bench	2	2
Total Rebounds	10	15	Team Rebounds	0	2	Dead Ball Reb	1	3
Off Rebound %	7.69	25.0	Def Rebound %	75.0	92.3	Total Rebound %	40.0	60.0

Technical Fouls **Hig** None
Hen None
 Officials Sherianne Shuey, Jack Whittemore, Craig Henson

	Qtr 1	Qtr 2	Qtr 3	Qtr 4	OT 1	OT 2	OT 3	OT 4	Total
Highlands Bluebirds	6	13	7	8	0	0	0	0	34
Henderson County Lady Colonels	15	13	17	10	0	0	0	0	55

KHSAA Basketball - Play by Play Report - Period: 1 (pg 1)
Henderson County Lady Colonels vs. Highlands Bluebirds
 Date: 03/23/2001 Time: 7:30pm CST Site: Girls' Sweet 16-Diddle Arena Attendance:

## Name	Action	Action	Score	Clock	Diff	## Name	Action	Action
10 K Gibson	Start Game					10 A Gibson	Start Game	
15 P Wimsatt	Start Game					15 K Winkler	Start Game	
23 S Dixon	Start Game					22 K Konen	Start Game	
31 A Buchanan	Start Game					25 E Hamel	Start Game	
32 B Fisher	Start Game					33 T Boothe	Start Game	
31 A Buchanan	Jump Ball Loss			1 7:58		33 T Boothe	Jump Ball Win	
				1 7:50		33 T Boothe	Offensive Foul	
				1 7:50		33 T Boothe	Turnover	
23 S Dixon	Charge Taken			1 7:50				
32 B Fisher	FG Attempt			1 7:33		33 T Boothe	Def Rebound	
			0-2	1 7:11	-2	33 T Boothe	Layup Made	22 K Konen Assist
15 P Wimsatt	3Pt Made	31 A Buchanan Assist	3-2	1 6:47	+1 (L1)			
				1 6:30		15 K Winkler	Turnover	(Traveling)
				1 6:11		10 A Gibson	Personal Foul	
				1 5:54		22 K Konen	Personal Foul	
32 B Fisher	FG Attempt			1 5:38		33 T Boothe	Def Rebound	
				1 5:22		33 T Boothe	Turnover	
31 A Buchanan	Steal			1 5:22				
10 K Gibson	3Pt Made	15 P Wimsatt Assist	6-2	1 5:06	+4			
				1 4:44		10 A Gibson	Offensive Foul	
				1 4:44		10 A Gibson	Turnover	
15 P Wimsatt	Charge Taken			1 4:44				
				1 4:43		24 E Owsley	Enter Game	for 10 A Gibson
31 A Buchanan	Layup Att	23 S Dixon Off Reb		1 4:15				
23 S Dixon	Putback Att	23 S Dixon Off Reb		1 4:13				
32 B Fisher	3Pt Made	15 P Wimsatt Assist	9-2	1 4:03	+7			
			9-4	1 3:20	+5	15 K Winkler	FG Made	24 E Owsley Assist
15 P Wimsatt	3Pt Attempt	10 K Gibson Off Reb		1 2:59				
10 K Gibson	FG Attempt			1 2:45		33 T Boothe	Block	15 K Winkler Def Reb
Lady Colonels	Def Rebound	(Dead Ball Reb)		1 2:30		15 K Winkler	FG Attempt	
				1 2:29				
15 P Wimsatt	Layup Made	23 S Dixon Assist	11-4	1 2:13	+7			
			11-6	1 1:31	+5	33 T Boothe	FG Made	22 K Konen Assist
23 S Dixon	FG Made	10 K Gibson Assist	13-6	1 0:57	+7			
31 A Buchanan	Personal Foul			1 0:41				
31 A Buchanan	Def Rebound			1 0:21		25 E Hamel	FG Attempt	
23 S Dixon	Layup Made	15 P Wimsatt Assist	15-6	1 0:12	+9			
				1 0:01		24 E Owsley	Turnover	
15 P Wimsatt	Steal			1 0:00				

End of Period Summary Lady Colonels 15 Bluebirds 6

Largest Lead: Lady Colonels 15 Bluebirds 6 (9 pts)
 Lead in Period: Lady Colonels 15 Bluebirds 6 (9 pts)
 0 for 0 oppo pts
 3 for 3 pts
 6/12 for 50.0 %
 0/0 for 0.00 %

Turnovers
 2nd Chances
 Field Goals
 Free Throws

Lead Changes: 1 Ties: 0
 Lead Changes: 1 Ties: 0 (this period)
 5 for 6 oppo pts
 0 for 0 pts
 3/5 for 60.0 %
 0/0 for 0.00 %

KHSAA Basketball - Play by Play Report - Period: 2 (pg 1)
Henderson County Lady Colonels vs. Highlands Bluebirds
Date: 03/23/2001 Time: 7:30pm CST Site: Girls' Sweet 16-Diddle Arena Attendance:

##	Name	Action	Action	Score	Clock	Diff	##	Name	Action	Action
15	P Wimsatt	Def Rebound			2 7:43		33	T Boothe	FG Attempt	
23	S Dixon	FG Made	32 B Fisher Assist	17-6	2 7:24	+11				
31	A Buchanan	Personal Foul			2 6:54					
31	A Buchanan	Leave Game			2 6:54					
					2 6:54		10	A Gibson	Enter Game	for 15 K Winkler
33	K Farris	Enter game			2 6:54					
33	K Farris	Personal Foul		17-7	2 6:52	+10	33	T Boothe	FT Made	
				17-8	2 6:52	+9	33	T Boothe	FT Made	
10	K Gibson	Turnover			2 6:50					
					2 6:31		24	E Owsley	Turnover	
33	K Farris	Steal			2 6:30					
32	B Fisher	3Pt Attempt			2 6:22		33	T Boothe	Def Rebound	
33	K Farris	Personal Foul			2 6:22					
44	W Waddell	Enter Game	for 33 K Farris		2 6:22					
44	W Waddell	Personal Foul			2 5:56					
				17-10	2 5:50	+7	10	A Gibson	FG Made	22 K Konen Assist
32	B Fisher	3Pt Attempt			2 5:43		33	T Boothe	Def Rebound	
				17-12	2 5:19	+5	33	T Boothe	FG Made	25 E Hamel Assist
32	B Fisher	FG Made	10 K Gibson Assist	19-12	2 3:49	+7				
					2 3:32		24	E Owsley	Turnover	(Traveling)
					2 3:32		15	K Winkler	Enter Game	for 24 E Owsley
					2 2:51					
44	W Waddell	Turnover			2 2:51					
43	M Jarrett	Enter Game	for 44 W Waddell		2 2:51					
				19-14	2 2:45	+5	33	T Boothe	Layup Made	15 K Winkler Assist
23	S Dixon	FG Made	15 P Wimsatt Assist	21-14	2 2:13	+7				
					2 2:00		33	T Boothe	Turnover	
					2 1:59					
43	M Jarrett	Steal			2 1:57	+9				
15	P Wimsatt	Layup Made		23-14	2 1:42	+6	33	T Boothe	3Pt Made	25 E Hamel Assist
				23-17	2 1:09					
15	P Wimsatt	Offensive Foul			2 1:09					
15	P Wimsatt	Turnover			2 1:00		15	K Winkler	Turnover	
32	B Fisher	3Pt Made	15 P Wimsatt Assist	26-17	2 0:32	+9				
43	M Jarrett	Personal Foul			2 0:15					
					2 0:15	+8	24	E Owsley	Enter Game	for 10 A Gibson
					2 0:15	+7	33	T Boothe	FT Made	
					2 0:06	+9	33	T Boothe	FT Made	
15	P Wimsatt	FG Made								

End of Period Summary Lady Colonels 28 Bluebirds 19

Largest Lead: Lady Colonels 17 Bluebirds 6 (11 pts)
Lead in Period: Lady Colonels 17 Bluebirds 6 (11 pts)
 3 for 2 oppo pts
 0 for 0 pts
 6/8 for 75.0 %
 0/0 for 0.00 %

Turnovers
2nd Chances
Field Goals
Free Throws

Lead Changes: 1 Ties: 0
Lead Changes: 0 Ties: 0 (this period)
 4 for 5 oppo pts
 0 for 0 pts
 4/5 for 80.0 %
 4/4 for 100 %

KHSAA Basketball - Game Box Score

Henderson County Lady Colonels vs. Highlands Bluebirds

Date: 03/23/2001 Time: 7:30pm CST Site: Girls' Sweet 16-Diddle Arena Attendance: Unknown

Visitors: Highlands Bluebirds

##	Name	P	FG	3 Pt	FT	PTS	ORB	DRB	TR	PF	AST	TO	BS	ST	MIN
10	* Abbi Gibson		1/1	0/0	0/0	2	0	0	0	2	0	1	0	0	9:56
15	* Kate Winkler		1/2	0/0	0/0	2	0	1	1	0	1	2	0	0	12:38
22	* Katie Konen		0/0	0/0	0/0	0	0	0	0	1	3	0	0	0	16:00
25	* Emily Hamel		0/1	0/0	0/0	0	0	0	0	0	2	0	0	0	16:00
33	* Tara Boothe		5/6	1/1	4/4	15	0	4	4	1	0	3	1	0	16:00
11	Kia Gearding														DNP
14	Jennifer Ball														DNP
24	Emily Owsley		0/0	0/0	0/0	0	0	0	0	0	1	3	0	0	9:26
30	Maggie Brown														DNP
35	Ashlie Berling														DNP
42	Liesi Grause														DNP
45	Shannon Ripberger														DNP
50	Deanna Feilen														DNP
Team							0	0	0						
Totals			7/10	1/1	4/4	19	0	5	5	4	7	9	1	0	80
Total FG			1st Half	7/10	70.0%	2nd Half	0/0	0.00%	Game	7/10	70.0%				
3 PT FG			1st Half	1/1	100%	2nd Half	0/0	0.00%	Game	1/1	100%				
Free Throws			1st Half	4/4	100%	2nd Half	0/0	0.00%	Game	4/4	100%				

Home: Henderson County Lady Colonels

##	Name	P	FG	3 Pt	FT	PTS	ORB	DRB	TR	PF	AST	TO	BS	ST	MIN
10	* Kera Gibson		1/2	1/1	0/0	3	1	0	1	0	2	1	0	0	16:00
15	* Princess Wimsatt		4/5	1/2	0/0	9	0	1	1	1	5	1	0	1	16:00
23	* Shonte Dixon		4/5	0/0	0/0	8	2	0	2	0	1	0	0	0	16:00
31	* Ann Buchanan		0/1	0/0	0/0	0	0	1	1	2	1	0	0	1	9:06
32	* Brooke Fisher		3/7	2/4	0/0	8	0	0	0	0	1	0	0	0	16:00
12	Courtney Buchanan														DNP
22	Jessica Vorbeck														DNP
24	Beth Duncan														DNP
30	Ashley Farris														DNP
33	Katie Farris		0/0	0/0	0/0	0	0	0	0	2	0	0	0	1	0:32
43	Melissa Jarrett		0/0	0/0	0/0	0	0	0	0	1	0	0	0	1	2:51
44	Whitney Waddell		0/0	0/0	0/0	0	0	0	0	1	0	1	0	0	3:31
Team							0	0	0						
Totals			12/20	4/7	0/0	28	3	2	5	7	10	3	0	4	80
Total FG			1st Half	12/20	60.0%	2nd Half	0/0	0.00%	Game	12/20	60.0%				
3 PT FG			1st Half	4/7	57.1%	2nd Half	0/0	0.00%	Game	4/7	57.1%				
Free Throws			1st Half	0/0	0.00%	2nd Half	0/0	0.00%	Game	0/0	0.00%				

	Hig	Hen		Hig	Hen		Hig	Hen
Free Throw Pts	4	0	3Pt Points	3	12	Pts/Possession	0.86	1.12
Pts off Turnovers	2	11	2nd Chance Points	0	3	Pts off Bench	0	0
Total Rebounds	5	5	Team Rebounds	0	0	Dead Ball Reb	1	1
Off Rebound %	0.00	37.5	Def Rebound %	62.5	100	Total Rebound %	50.0	50.0
Technical Fouls	Hig	None						
	Hen	None						
Officials	Sherianne Shuey, Jack Whittemore, Craig Henson							

	Qtr 1	Qtr 2	Qtr 3	Qtr 4	OT 1	OT 2	OT 3	OT 4	Total
Highlands Bluebirds	6	13	0	0	0	0	0	0	19
Henderson County Lady Colonels	15	13	0	0	0	0	0	0	28

KHSAA Basketball - Play by Play Report - Period: 3 (pg 1)
Henderson County Lady Colonels vs. Highlands Bluebirds
 Date: 03/23/2001 Time: 7:30pm CST Site: Girls' Sweet 16-Diddle Arena Attendance:

##	Name	Action	Action	Score	Clock	Diff	##	Name	Action	Action
31	A Buchanan	Enter Game	for 43 M Jarrett		3 8:00		10	A Gibson	Enter Game	for 24 E Owsley
23	S Dixon	FG Made	10 K Gibson Assist	30-19	3 8:00					
32	B Fisher	Def Rebound			3 7:47	+11	25	E Hamel	FG Attempt	
32	B Fisher	Turnover			3 7:15		25	E Hamel	Steal	
					3 7:15		33	T Boothe	Turnover	
15	P Wimsatt	Steal			3 7:10					
23	S Dixon	Layup Made	15 P Wimsatt Assist	32-19	3 7:05	+13	10	A Gibson	3Pt Attempt	
15	P Wimsatt	Def Rebound			3 6:38		33	T Boothe	Turnover	
31	A Buchanan	Turnover	(Traveling)		3 6:35					
15	P Wimsatt	Steal			3 6:24					
15	P Wimsatt	Layup Made	23 S Dixon Assist	34-19	3 6:22	+15				
					3 6:20		Bluebirds	20 Sec Time Out		
10	K Gibson	Steal			3 6:15		15	K Winkler	Turnover	
31	A Buchanan	FG Attempt			3 5:58		33	T Boothe	Block	33 T Boothe Def Reb
					3 5:57		15	K Winkler	Turnover	
10	K Gibson	Turnover			3 5:35		33	T Boothe	Steal	
23	S Dixon	Def Rebound			3 5:27		33	T Boothe	FG Attempt	
15	P Wimsatt	Offensive Foul			3 5:05		15	K Winkler	Steal	
15	P Wimsatt	Turnover			3 4:50		33	T Boothe	FG Attempt	
					3 4:45					
					3 4:45		10	A Gibson	Charge Taken	
					3 4:45		24	E Owsley	Enter Game	for 15 K Winkler
					3 4:08		33	T Boothe	Turnover	
32	B Fisher	Steal			3 4:07					
32	B Fisher	3Pt Made	15 P Wimsatt Assist	37-19	3 3:50	+18				
					3 3:45		Bluebirds	20 Sec Time Out		
					3 3:35	+16	10	A Gibson	Layup Made	
					3 3:30		33	T Boothe	Personal Foul	
23	S Dixon	Turnover			3 3:18					
					3 2:53		10	A Gibson	Turnover	
					3 2:52					
32	B Fisher	FT Made		38-21	3 2:44	+17	42	L Grause	Enter Game	for 25 E Hamel
32	B Fisher	FT Made		39-21	3 2:44	+18	42	L Grause	Personal Foul	
31	A Buchanan	Personal Foul			3 2:26					
					3 2:26		15	K Winkler	Enter Game	for 24 E Owsley
					3 2:26		33	T Boothe	FT Attempt	Bluebirds Deadball Reb
					3 2:26	+17	33	T Boothe	FT Made	
31	A Buchanan	Turnover			3 2:24					
					3 2:22		22	K Konen	Steal	
					3 2:20	+15	33	T Boothe	Layup Made	
23	S Dixon	Personal Foul			3 2:20					
Lady Colonels	20 Sec Time Out				3 2:20		33	T Boothe	FT Attempt	
Lady Colonels	Def Rebound	(Dead Ball Reb)			3 2:19		24	E Owsley	Enter Game	for 42 L Grause
					3 2:08		33	T Boothe	Personal Foul	
15	P Wimsatt	Turnover			3 2:07					
32	B Fisher	Block	31 A Buchanan Def Reb		3 2:07		33	T Boothe	Steal	
32	B Fisher	3Pt Made	23 S Dixon Assist	42-24	3 1:50	+18	33	T Boothe	Layup Att	
					3 1:17		10	A Gibson	Turnover	
32	B Fisher	3Pt Attempt			3 0:49		33	T Boothe	Def Rebound	
33	K Farris	Enter Game	for 31 A Buchanan		3 0:39		15	K Winkler	Turnover	
23	S Dixon	FG Attempt			3 0:39					
15	P Wimsatt	Personal Foul			3 0:26		10	A Gibson	Def Rebound	
					3 0:19					
32	B Fisher	3Pt Made	15 P Wimsatt Assist	42-26	3 0:15	+16	33	T Boothe	Layup Made	22 K Konen Assist
				45-26	3 0:01	+19				

End of Period Summary Lady Colonels 45 Bluebirds 26

Largest Lead: Lady Colonels 45 Bluebirds 26 (19 pts)
Lead in Period: Lady Colonels 45 Bluebirds 26 (19 pts)
 7 for 2 oppo pts
 0 for 0 pts
 6/9 for 66.7 %
 2/2 for 100 %

Turnovers
2nd Chances
Field Goals
Free Throws

Lead Changes: 1 Ties: 0
Lead Changes: 0 Ties: 0 (this period)
 8 for 9 oppo pts
 0 for 0 pts
 3/7 for 42.9 %
 1/3 for 33.3 %

KHSAA Basketball - Play by Play Report - Period: 4 (pg 1)
Henderson County Lady Colonels vs. Highlands Bluebirds
 Date: 03/23/2001 Time: 7:30pm CST Site: Girls' Sweet 16-Diddle Arena Attendance:

## Name	Action	Action	Score	Clock	Diff	## Name	Action	Action
31 A Buchanan	Enter Game	for 33 K Farris		4 8:00		42 L Grause	Enter Game	for 22 K Konen
15 P Wimsatt	Turnover			4 8:00				
				4 7:32				
31 A Buchanan	Def Rebound			4 7:31		42 L Grause	Steal	
				4 7:21		15 K Winkler	3Pt Attempt	
				4 7:21		10 A Gibson	Personal Foul	
				4 7:04		42 L Grause	Personal Foul	
				4 6:23		33 T Boothe	Personal Foul	
				4 6:16		15 K Winkler	Personal Foul	
				4 6:16		25 E Hamel	Enter Game	for 42 L Grause
10 K Gibson	FT Made		46-26	4 6:16	+20			
10 K Gibson	FT Made		47-26	4 6:16	+21			
32 B Fisher	Def Rebound			4 5:46		33 T Boothe	FG Attempt	
Lady Colonels	Time Out			4 5:14				
15 P Wimsatt	Turnover			4 4:53				
				4 4:52		33 T Boothe	Steal	
Lady Colonels	Def Rebound			4 4:44		15 K Winkler	3Pt Attempt	
15 P Wimsatt	Turnover			4 4:15				
				4 4:15		30 M Brown	Enter Game	for 15 K Winkler
Lady Colonels	20 Sec Time Out			4 4:15				
			47-28	4 3:58	+19	25 E Hamel	FG Made	33 T Boothe Assist
15 P Wimsatt	FT Made		48-28	4 3:52	+20	10 A Gibson	Personal Foul	
15 P Wimsatt	FT Made		49-28	4 3:52	+21			
				4 3:41		33 T Boothe	3Pt Attempt	24 E Owsley Off Reb
				4 3:35		10 A Gibson	FG Attempt	
Lady Colonels	Def Rebound			4 3:19	+22	25 E Hamel	Personal Foul	
32 B Fisher	FT Made		50-28	4 3:19	+23			
32 B Fisher	FT Made		51-28	4 3:19	+23			
15 P Wimsatt	Def Rebound			4 3:02		33 T Boothe	FG Attempt	
				4 3:00				
15 P Wimsatt	Turnover			4 2:57				
			51-30	4 2:56		33 T Boothe	Steal	
				4 2:55	+21	25 E Hamel	Layup Made	33 T Boothe Assist
31 A Buchanan	Layup Made	15 P Wimsatt Assist	53-30	4 2:43	+23			
			53-32	4 2:31	+21	33 T Boothe	FG Made	10 A Gibson Assist
				4 2:01		14 J Ball	Enter Game	for 10 A Gibson
12 C Buchanan	Enter Game	for 23 S Dixon		4 2:01				
				4 1:12		25 E Hamel	Personal Foul	
33 K Farris	Enter Game	for 32 B Fisher		4 1:12				
				4 1:12		25 E Hamel	Leave Game	
				4 1:12		15 K Winkler	Enter Game	for 33 T Boothe
				4 1:12		42 L Grause	Enter game	
31 A Buchanan	FT Attempt	Lady Colonels Deadball Reb		4 1:12				
31 A Buchanan	FT Attempt			4 1:12		42 L Grause	Def Rebound	
10 K Gibson	Def Rebound			4 0:53		15 K Winkler	FG Attempt	
15 P Wimsatt	Turnover			4 0:45				
15 P Wimsatt	Leave Game			4 0:45				
30 A Farris	Enter Game	for 31 A Buchanan		4 0:45				
44 W Waddell	Enter game	for 10 K Gibson		4 0:45				
24 B Duncan	Enter game	for 33 K Farris		4 0:45				
22 J Vorbeck	Enter game			4 0:45				
				4 0:45		35 A Berling	Enter Game	for 15 K Winkler
				4 0:38		14 J Ball	Leave Game	
				4 0:38		24 E Owsley	Leave Game	
				4 0:38		30 M Brown	Leave Game	
				4 0:38		35 A Berling	Leave Game	
				4 0:38		14 J Ball	Enter Game	for 42 L Grause
				4 0:38		35 A Berling	Enter game	
				4 0:38		45 S Ripberger	Enter game	
				4 0:38		30 M Brown	Enter game	
				4 0:38		11 K Gearding	Enter game	
			53-34	4 0:20	+19	45 S Ripberger	Layup Made	35 A Berling Assist
30 A Farris	FT Made		54-34	4 0:15	+20	45 S Ripberger	Personal Foul	
30 A Farris	FT Made		55-34	4 0:15	+21			

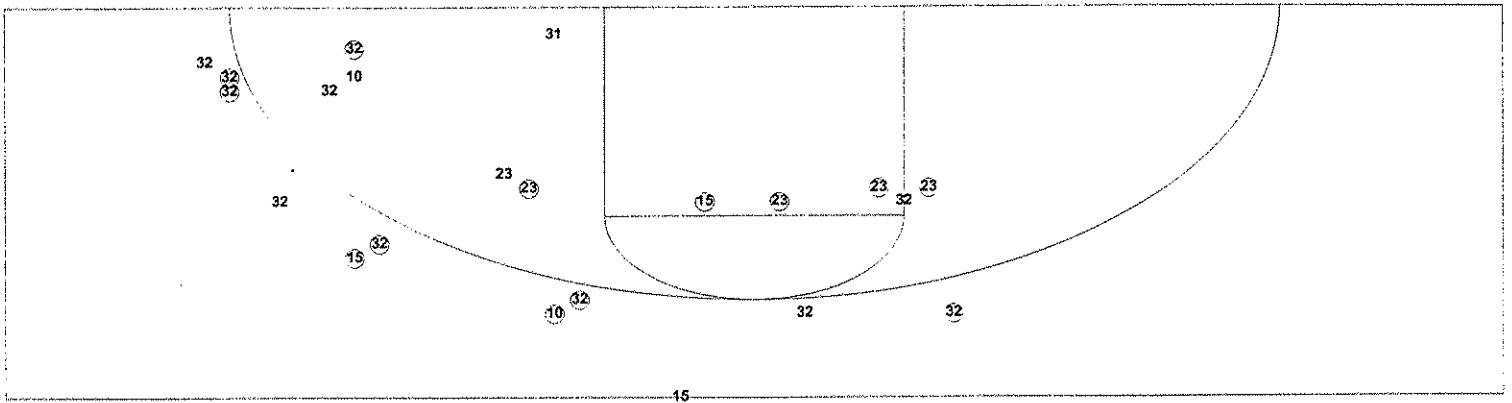
End of Period Summary Lady Colonels 55 Bluebirds 34

Largest Lead: Lady Colonels 51 Bluebirds 28 (23 pts)
 Lead in Period: Lady Colonels 51 Bluebirds 28 (23 pts)
 5 for 6 oppo pts
 0 for 0 pts
 1/1 for 100 %
 8/10 for 80.0 %

Turnovers
 2nd Chances
 Field Goals
 Free Throws

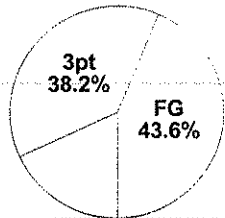
Lead Changes: 1 Ties: 0
 Lead Changes: 0 Ties: 0 (this period)
 0 for 0 oppo pts
 1 for 0 pts
 4/11 for 36.4 %
 0/0 for 0.0 %

KHSAA Basketball - TEAM SHOT CHART for the Lady Colonels
Henderson County Lady Colonels vs. Highlands Bluebirds
DATE: 03/23/2001 TIME: 7:30pm CST SITE: Girls' Sweet 16-Diddle Arena

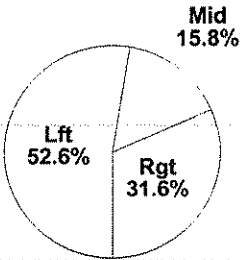


Shot Summary	M/A	%	PTS
3Pt FG	7/11	63.6%	21
2Pt FG	12/19	63.2%	24
Layups - L	2/2	100.0%	4
Layups - R	4/5	80.0%	8
Dunks	0/0	0.0%	0
Putbacks	0/1	0.0%	0
Overall Shooting	19/30	63.3%	45
Free Throws	10/12	83.3%	10
Total Points			55

Scoring Distribution

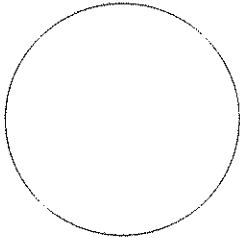


Scoring Locations

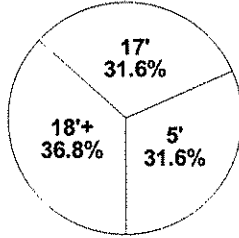


By Period	FG	FGA	FG%	3Pt	3PA	3P%	FT	FTA	FT%	PTS	ORB	DRB	TR	PF	AST	TO	BS	ST	P/S
1st Period	6	12	50.0	3	4	75.0	0	0	0.00	15	3	1	4	1	6	0	0	2	1.25
2nd Period	6	8	75.0	1	3	33.3	0	0	0.00	13	0	1	1	6	4	3	0	2	1.63
3rd Period	6	9	66.7	3	4	75.0	2	2	100	17	0	4	4	4	6	7	1	4	1.70
4th Period	1	1	100	0	0	0.00	8	10	80.0	10	0	6	6	0	1	5	0	0	1.67
Game	19	30	63.3	7	11	63.6	10	12	83.3	55	3	12	15	11	17	15	1	8	1.53

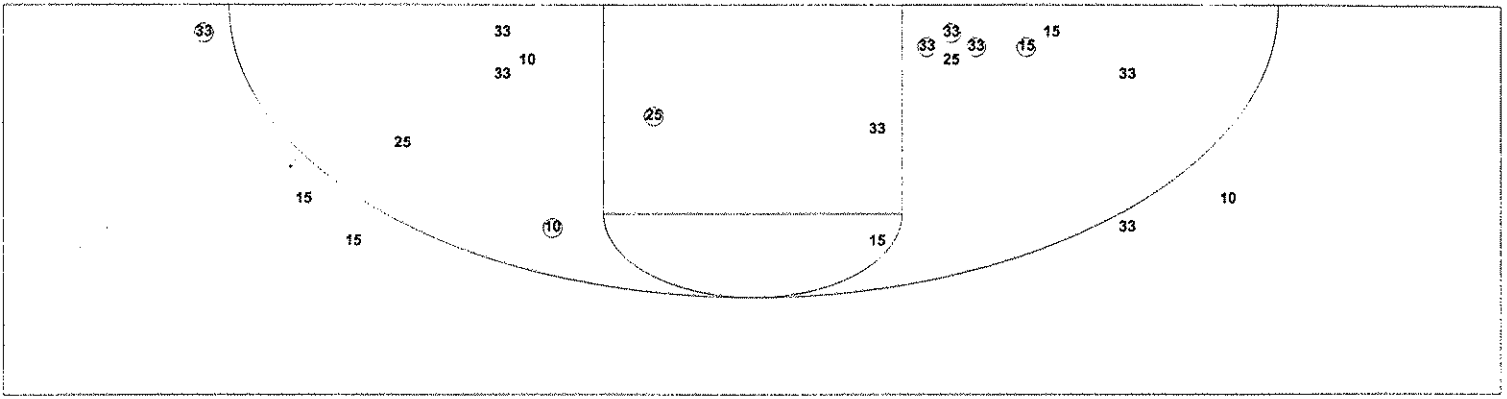
Scoring Breakdown



Scoring Range

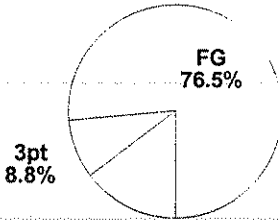


KHSAA Basketball - TEAM SHOT CHART for the Bluebirds
Henderson County Lady Colonels vs. Highlands Bluebirds
DATE: 03/23/2001 TIME: 7:30pm CST SITE: Girls' Sweet 16-Diddle Arena

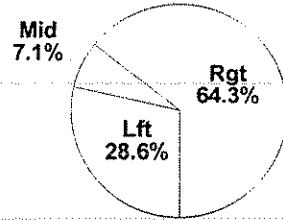


Shot Summary	M/A	%	PTS
3Pt FG	1/5	20.0%	3
2Pt FG	13/23	56.5%	26
Layups - L	2/3	66.7%	4
Layups - R	5/5	100.0%	10
Dunks	0/0	0.0%	0
Putbacks	0/0	0.0%	0
Overall Shooting	14/28	50.0%	29
Free Throws	5/7	71.4%	5
Total Points			34

Scoring Distribution

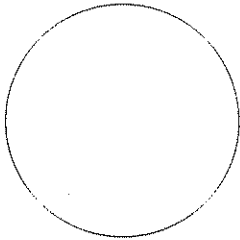


Scoring Locations



By Period	FT																		
	FG	FGA	FG%	3Pt	3PA	3P%	FT	FTA	FT%	PTS	ORB	DRB	TR	PF	AST	TO	BS	ST	P/S
1st Period	3	5	60.0	0	0	0.00	0	0	0.00	6	0	3	3	4	3	5	1	0	1.20
2nd Period	4	5	80.0	1	1	100	4	4	100	13	0	2	2	0	4	4	0	0	1.86
3rd Period	3	7	42.9	0	1	0.00	1	3	33.3	7	0	3	3	3	1	8	1	4	0.88
4th Period	4	11	36.4	0	3	0.00	0	0	0.00	8	1	1	2	8	4	0	0	3	0.73
Game	14	28	50.0	1	5	20.0	5	7	71.4	34	1	9	10	15	12	17	2	7	1.10

Scoring Breakdown



Scoring Range

